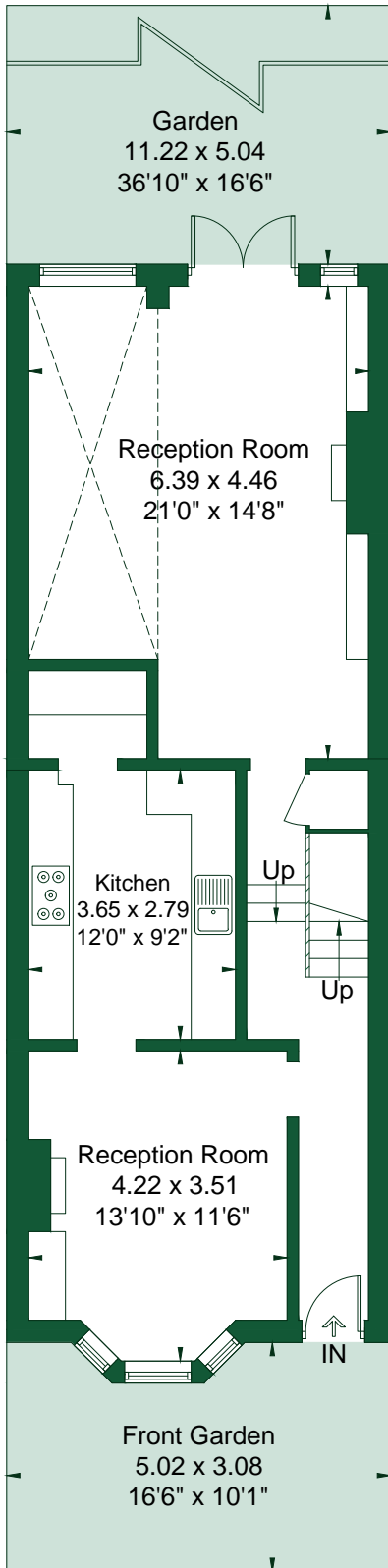


Saville Road

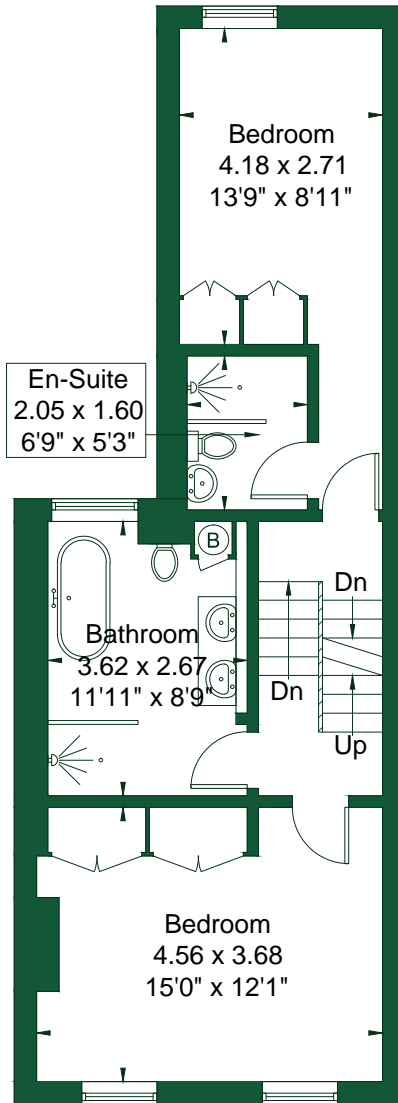
Approximate Gross Internal Area = 140.1 sq m / 1508 sq ft

Eaves / Reduced Headroom = 10.5 sq m / 113 sq ft

Total = 150.6 sq m / 1621 sq ft

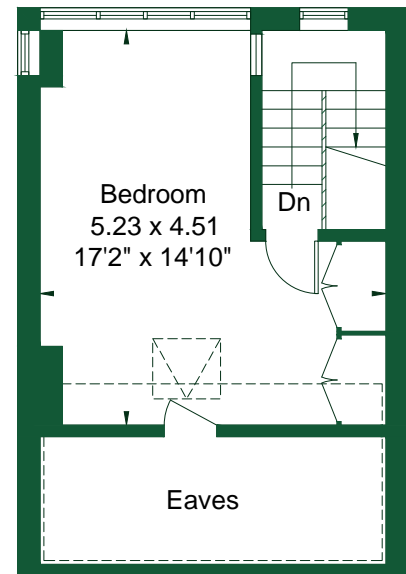


Ground Floor
66.2 sq m / 712 sq ft



First Floor
51.7 sq m / 556 sq ft

= Reduced headroom below 1.5m / 5'0"



Second Floor
22.2 sq m / 239 sq ft
Reduced Headroom
10.5 sq m / 113 sq ft

Although every attempt has been made to ensure accuracy, all measurements are approximate.

The floorplan is for illustrative purposes only and not to scale.

© www.perspective.co.uk